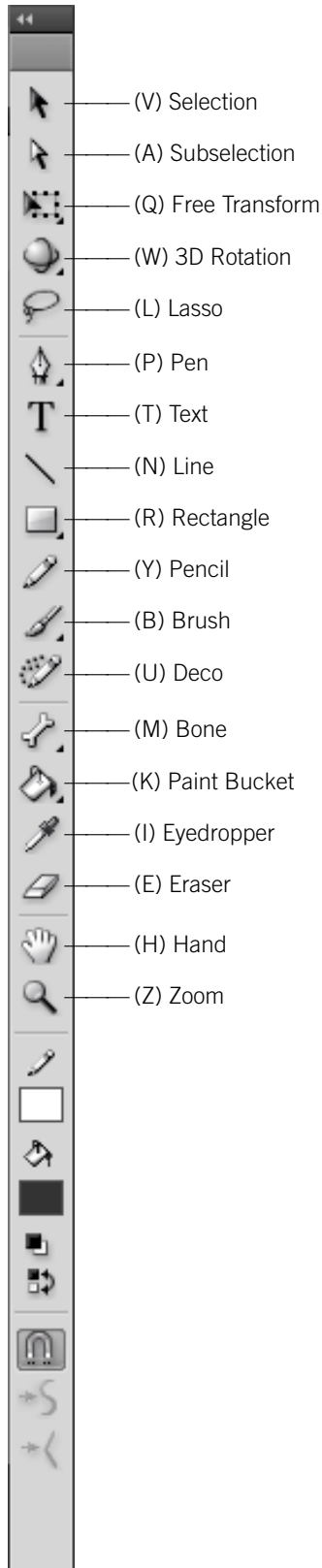




TOOLS



TIMELINE

Insert Frame	F5
Delete Frame	Shift-F5
Insert Keyframe.....	F6
Clear Keyframe	Shift-F6
Insert Blank Keyframe.....	F7
Play	Return
Rewind	Shift-Comma (,)
Step Forward One Frame	Period (.)
Step Backward One Frame.....	Comma (,)

SYMBOLS & SHAPES

Convert to Symbol.....	F8
Create New Symbol.....	⌘-F8
Break Apart	⌘-B
Group	⌘-G
Ungroup	⌘-Shift-G
Bring Forward.....	⌘-Up Arrow
Bring to Front.....	Opt-Shift-Up Arrow
Send Backward.....	⌘-Down Arrow
Send to Back	Opt-Shift-Down Arrow
Distribute to Layers	⌘-Shift-D
Paste in Place.....	⌘-Shift-V
Add Shape Hint	⌘-Shift-H
Show Shape Hints.....	⌘-Opt-H

PANELS

Actions	Opt-F9
Library	⌘-L
Properties	⌘-F3
Align	⌘-K
Transform	⌘-T
Color.....	⌘-Shift-F9
Document Properties	⌘-J
Hide All Panels	F4

MISC.

Test Movie	⌘-Return
Bandwidth Profiler (while in Test Movie)	⌘-B
Simulate Download (while in Test Movie)	⌘-Return
Publish	⌘-Shift-F12
Import to Stage	⌘-R

NOBLE DESKTOP

<!--Exceptional computer graphics training.-->

594 Broadway, Suite 1202, New York, NY 10012
212.226.4149 www.nobledesktop.com